

PT® Fendona®

Pressurized Insecticide

Product Tech Sheet

Active Ingredient (A.I.):

Alpha-cypermethrin

- IRAC Group 3A
- 0.05% active ingredient

Formulation type:

Oil-based aerosol

Product packaging:

12 cans x 17.5 oz.

PPE:

Long-sleeved shirt, long pants, socks, shoes and gloves

For use in and around*:

Commercial, Industrial, and Residential areas and Buildings including Agricultural Buildings, Apartments Cafeterias, Calf Hutches, Convenience Stores, Cruise Ships, Dairy Areas, Day Care Centers, Dog Kennels, Food Handling Facilities, Food Processing Areas and Plants, Food Storage Areas, Food Vendors, Garbage Receptacles, Granaries, Health Care Facilities, Homes, Hotels, Malls, Meat Packing Plants, Nursing Homes, Poultry Houses, Restaurants and other Food Handling Establishments, Schools, Supermarkets, Trailers, Transportation Equipment, Utilities, Warehouses and Washrooms.

* For additional use sites, please refer to the EPA-approved product label.

Application:

Crack & Crevice® application, Spot, Void and General Surface applications supported.

- Heavy applications may leave residue; clean with damp cloth/sponge
- Crack & Crevice® application:
 - Light infestations: 3 feet/second
 - heavy infestations: 1 foot/second
- Void applications: 1-5 seconds/3 cubic feet of void
- Spot applications: 1 second/2 square feet. Apply 12" away from surface

Application Tips:

- Reapply as necessary but not more than twice per week and at least 3 days apart
- For crawling insects, apply to areas where pests may be harboring such as openings around pipes and sinks, under refrigerators, behind baseboards, washing machines, stoves, cabinets and meter boxes
- For flies and other flying insects, treat window frames, screens, trash cans, ceilings and upper wall surfaces
- For bed bugs and their eggs, apply where they are harboring or are suspected of traveling. Treat the room perimeter, behind and/or inside furniture, headboards, wall coverings, luggage and box springs. For these uses, carefully read and follow label directions. Do not use on mattresses, pillows, bed linens or clothing
- For carpenter ants, treat the interior of trees and stumps; utility poles and fences

- Food/feed handling establishments can be treated using Crack & Crevice application, void and spot applications. General surface applications may be used when the facility is not in operation
- Can be applied as a Crack & Crevice application or spot treatment for outdoor applications where pests may enter premises or harbor

Features and Benefits:

- Excellent residual activity against house flies (non-porous surfaces) and bed bugs (wood surfaces)
- Quick knockdown to many pests
- Active Ingredient 3X more powerful than cyfluthrin
- Compatible with **System III®** applicator for increased savings, precision and professionalism
- Labeled for 65+ use sites, including food- and feed-handling areas
- Labeled for 60 arthropod pests
- Contains less active ingredient than other pressurized products while still killing scores of labeled pests

Do Not Apply:

- When weather favors drift
- To blooming crops if bees are foraging. May cause phytotoxicity if applied directly to plants
- To storm drains, drainage ditches, gutters or surface waters

Do Not:

- Use or store near heat or open flame
- Puncture or incinerate container

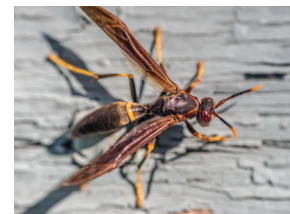
Target Pests ¹	Application Site	
	Indoors	Outdoors
Crawling pests - ants, bed bugs, centipedes, cockroaches, crickets, dermestids, earwigs, firebrats, millipedes, silverfish, sowbugs, and spiders (including black widow and brown recluse)	✓	✓
Flies (fruit, house, and stable)	✓	✓
Ticks	✓	✓
Stored product pests	✓	
Ants, including carpenter ants, foraging harvester and southern fire ants	✓	✓
Bees and wasps	✓	✓
Wood destroying insects - beetles, borers and drywood termites ²	✓	✓

¹ For a full list of target pests, refer to the product label.

² Intended to kill drywood termites on contact only. Such applications are not a substitute for mechanical alteration, soil treatment, or foundation treatment.



To view technical information bulletins, sell sheets and more, go to <https://pestcontrol.basf.us/products/pt-fendona.html>



BASF

We create chemistry

Always read and follow label directions.

Crack & Crevice, Fendona and System III are registered trademarks of BASF.
© 2022 BASF Corporation. All rights reserved. PSS 22-1901

