

# Alpine® WSG

Water Soluble Granule Insecticide

## Brilliantly effective. Go antless with Alpine WSG Insecticide.

- Get unprecedented control with genuine Transfer Effect technology.
- Flexible label that allows surface applications and curative ant broadcast application to lawns.
- Non-pyrethroid, nonrepellent solution that prevents pests from being locked indoors.
- Clear, odorless solution that mixes easily and will not clog equipment.
- Now for use in food handling areas.
- All the power you have come to expect from the Alpine insecticide family.

Ants exposed to Alpine WSG insecticide readily transfer to other ants in the colony. Alpine has genuine Transfer Effect technology, increasing control to get the job done right the first time. In addition to ants, this powerful tool is an excellent choice for bed bugs, fleas, brown marmorated stink bugs, kudzu bugs, house flies, German cockroaches and more!

Alpine WSG Water Soluble Granule with genuine Transfer Effect technology gives you the power and flexibility to control ants at the source. Its proven, long-lasting formula is easy to use and nonrepellent. Alpine's flexible label allows for use both inside and outside, even off-structure, letting you go almost anywhere pests do.

Visit [pestcontrol.basf.us](http://pestcontrol.basf.us) for more information.

 **BASF**

We create chemistry

# Alpine® WSG

Water Soluble Granule Insecticide

- Transfer Effect:** Shows strong transfer effect with ants, even at a ratio of 1 donor ant per 50 recipients.
- Undetectable Formulation:** A nonrepellent product that controls many of the most common insect pests, including ants, bed bugs, fleas, brown marmorated stink bugs, kudzu bugs, house flies and German cockroaches.
- Non-Staining Solution:** Dissolves into a clear solution that does not stain upon application.
- Surface Application:** Label allows surface and curative broadcast applications for ants to yards, lawns and landscaping.
- No Application Interval:** Label does not impose any restrictions on how often treatments may be applied.

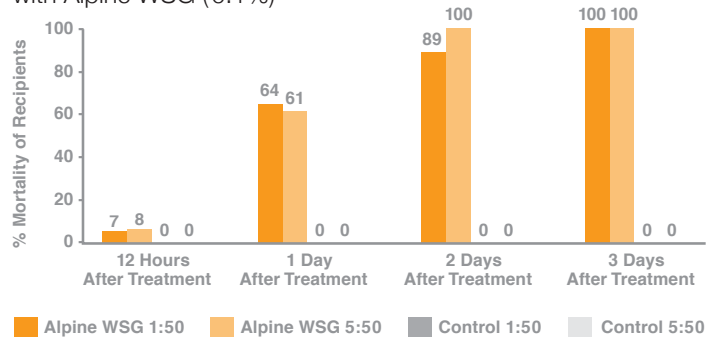


**Alpine WSG 500g**  
Article# 59014217  
4 x 500g

**Alpine WSG 200g**  
Article#59014203  
4 x 200g

## Alpine Transfer – Black Carpenter Ants

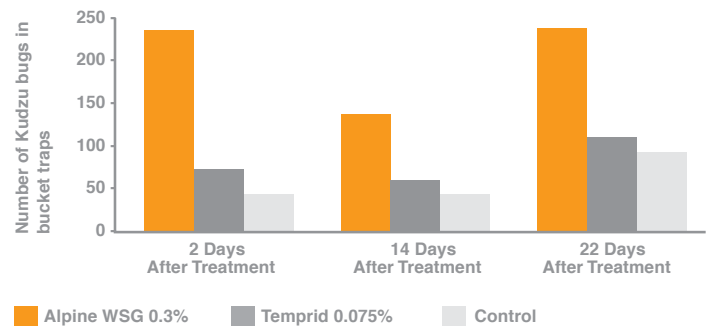
Average Percent Mortality of Recipients due to Transfer Effect with Alpine WSG (0.1%)\*



\* The label states 20g per gallon for carpenter ants. Dr. Buczkowski, Purdue, 2013

## Alpine – Kudzu Bugs

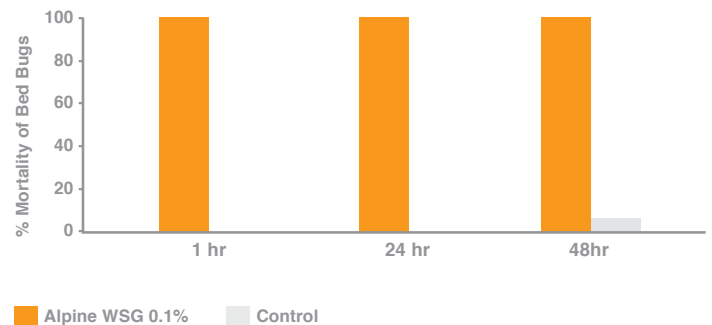
Number of Dead Kudzu Bugs After Gutter Application



Daniel R. Suiter and Monica L. Townsend, University of Georgia Griffin Campus, 2013

## Alpine Residual – Bed Bugs

Percent Mortality of Bed Bugs with Direct Spray Alpine WSG (0.1%)\*



\* The label states 30g per gallon for bed bugs. Granovsky Associates, Inc., 2010

For more information, visit: [pestcontrol.basf.us](http://pestcontrol.basf.us)

Always read and follow label directions.

Visit [www.pestcontrol.basf.us](http://www.pestcontrol.basf.us) for state regulations. Alpine is a registered trademark of BASF Corporation. © 2015 BASF Corporation. All rights reserved.